

# TK14 PRINTER SERIES

TK14 is the latest novelty from Fenix as an ideal solution for applications in which a safe, efficient and cheap printer is a must. Designed to meet the most demanding environments; delivery of tickets directly to the general public in a safety way and to keep operating in the hardest temperature

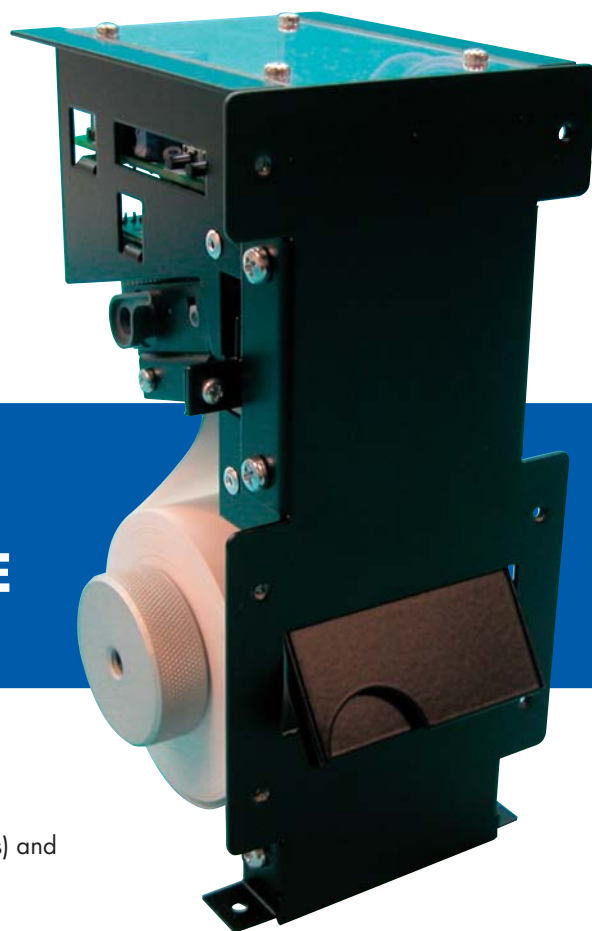
## LOW-PROFILE KIOSK/PANEL-MOUNT PRINTER WITH PASSIVE CUT SYSTEM

### Applications

Certain kiosk applications, self-service machines (as gas pump stations) and vending machines (as tickets, drink or tobacco vending machines)

### Main features

- Small, compact and lightweight design
- Passive cut of paper (cut is performed once receipt is pulled out)
- Nozzle receipt presenter
- Both Serial RS232C and bidirectional IEEE1284 parallel data input interfaces on-board
- 12V to 24V single power drive, or 5V single power drive
- High printing speed up to 62,5 mm/s
- Printing resolution of 8 dots/mm (203dpi)
- Low-paper, no-paper and paper-jam detection sensors
- Low-paper and paper-jam LED indicator
- Capable to support thick paper
- Extended operating temperature range
- 10Kbyte input data buffer
- Readable printing position of the receipt for the end-user in graphic mode
- Printing adjustments: speed, density and consumption
- European standard PC437 character table
- Command list compatible with Epson ESC/POS™ protocol
- Remarkable commands:
  - Two different font sizes (font A = 12x24 dot, font B = 8x16 dot)
  - Scalable fonts (independent scale in X / Y axis) up to 64 times
  - Bold and reverse printing feature
  - Character and line spacing programmable
  - Graphic bitmap printing feature
  - EAN13, CODE39, CODE128 and ITF barcode formats
  - Self test, hexadecimal and configuration mode features
- Windows 85/98/2000 & XP drivers and demo/configuration program



**FENIX**  
IMVICO, S.A.

Made in Spain by:

Quality and Service

# TK14 PRINTER SERIES

## How to order

TK14-58 **XX-XX**

nil: standard type  
XX: custom-made type (under agreement only)

12 : 12 to 24VDC power supply voltage  
5 : 5VDC power supply voltage

## Technical specifications

Model	TK14-58/5	TK14-58/12
Printing method	Thermal line dot system	
Printing mechanism	SEIKO LTP1245	
Data input interfaces	Bidirectional IEEE1284 parallel & serial RS232C	
Dot composition/line	384	
Resolution (dots/mm)	8	
Maximum printing speed (mm/sec)	62,5	
Power supply	Single 5VDC	Single 12 to 24VDC
Cut method	Passive cut (paper tear-off)	
Paper width (mm)	58	
Printing width (mm)	48	
Reliability	100 million pulses activation or more (25% print ratio) Abrasion resistance of 50Km or more	
Operating ambient temperature range (°C)	-30 to 70 *	
Maximum paper roll diameter (mm)	80	
Inner core diameter (mm)	25	
Paper length (m)	70	
Dimensions WxDxH (mm)	95 x 122 x 198	
Weight (gr)	500	

\* Full operation is guaranteed low to -15°C

If you intend to switch on the printer being lower than -15°C, DC motor could be maybe blocked and the first few tickets could face printing troubles. After a few tickets, printer should perform correctly.

Below -5°C automatic paper loading can not be performed. Paper should be loaded manually.

Below -20°C heat sensitizer may stick to the printhead. If that happens, clean the printhead.

Continuous printing must be performed for less than 5 minutes at a temperature of over 50°C.



Certificate number: 0752/2001-40-BAREVIC



**FENIX**  
IMVICO, S.A.  
Quality and Service

Factory and Headquarters: Pacifico, 53-55  
08027 BARCELONA  
Tel.: 93 353 92 22 - Fax: 93 353 97 21  
e-mail: BCN@feniximvico.com

[www.feniximvico.com](http://www.feniximvico.com)